

SCHEDULE L2 MIDTOWN OAKVILLE DENSITY



URBAN GROWTH CENTRE /
PROTECTED MAJOR TRANSIT STATION AREA /
GROWTH AREA BOUNDARY

1.5 TO 4 FSI

2.5 TO 4 FSI

2.5 TO 6 FSI

4.0 TO 10 FSI*

NATURAL AREA

PARKS AND OPEN SPACE

DENSITY COMPATIBLE WITH
UTILITY CORRIDOR

FUTURE ROADS
(refer to Schedule L3 for more detail)

INTERSECTION CONFIGURATION
SUBJECT TO FURTHER STUDY

RAILWAY

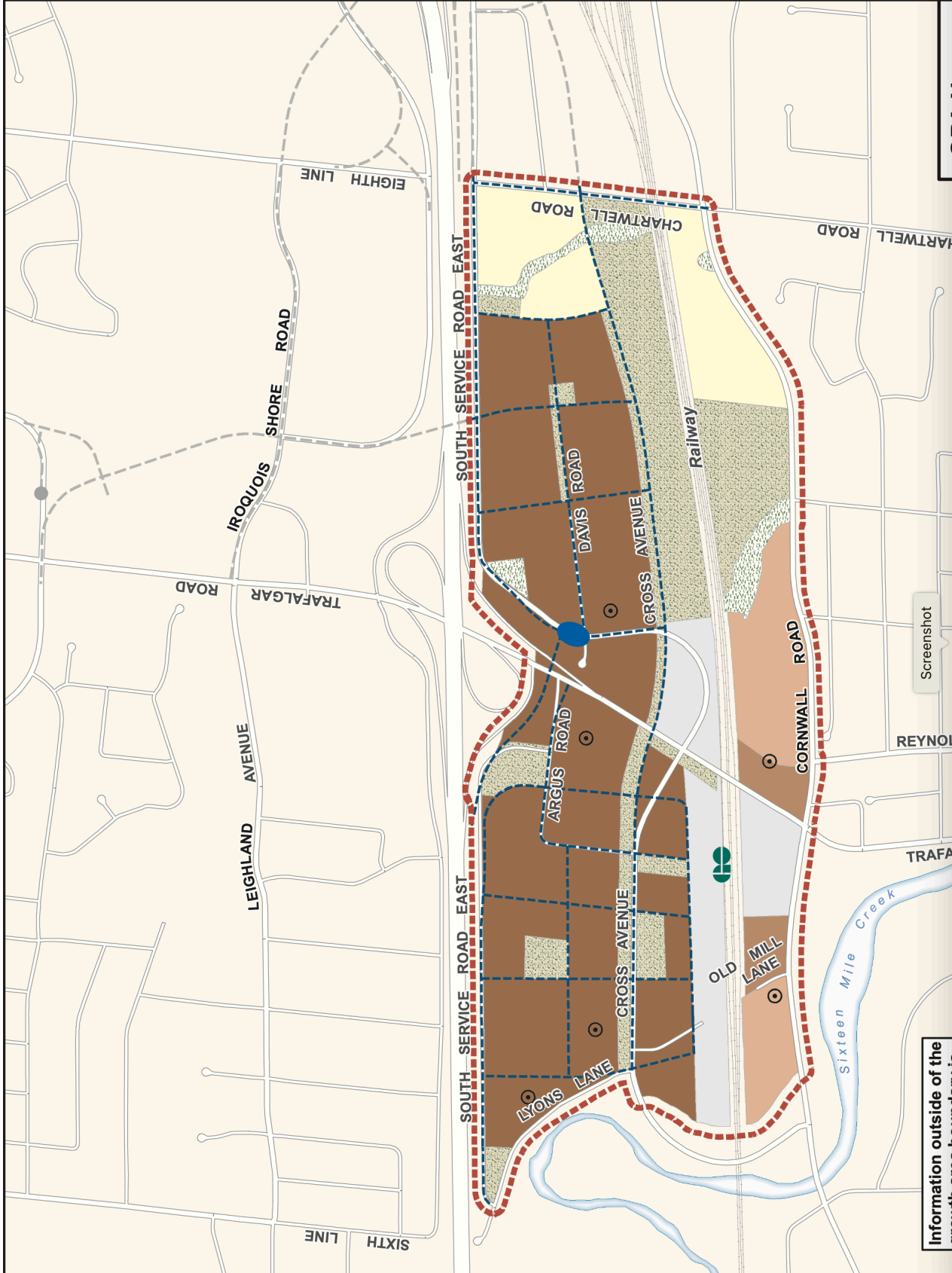
MAJOR TRANSIT STATION

REFER TO PART E, MIDTOWN OAKVILLE EXCEPTIONS

* ADDITIONAL DENSITY MAY BE PERMITTED
REFER TO PART E, MIDTOWN OAKVILLE, FOR GROWTH
AREA POLICIES



1:7,500



Screenshot

Information outside of the
study area boundary is