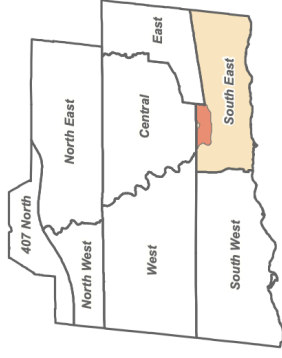


SCHEDULE L1 MIDTOWN OAKVILLE LAND USE



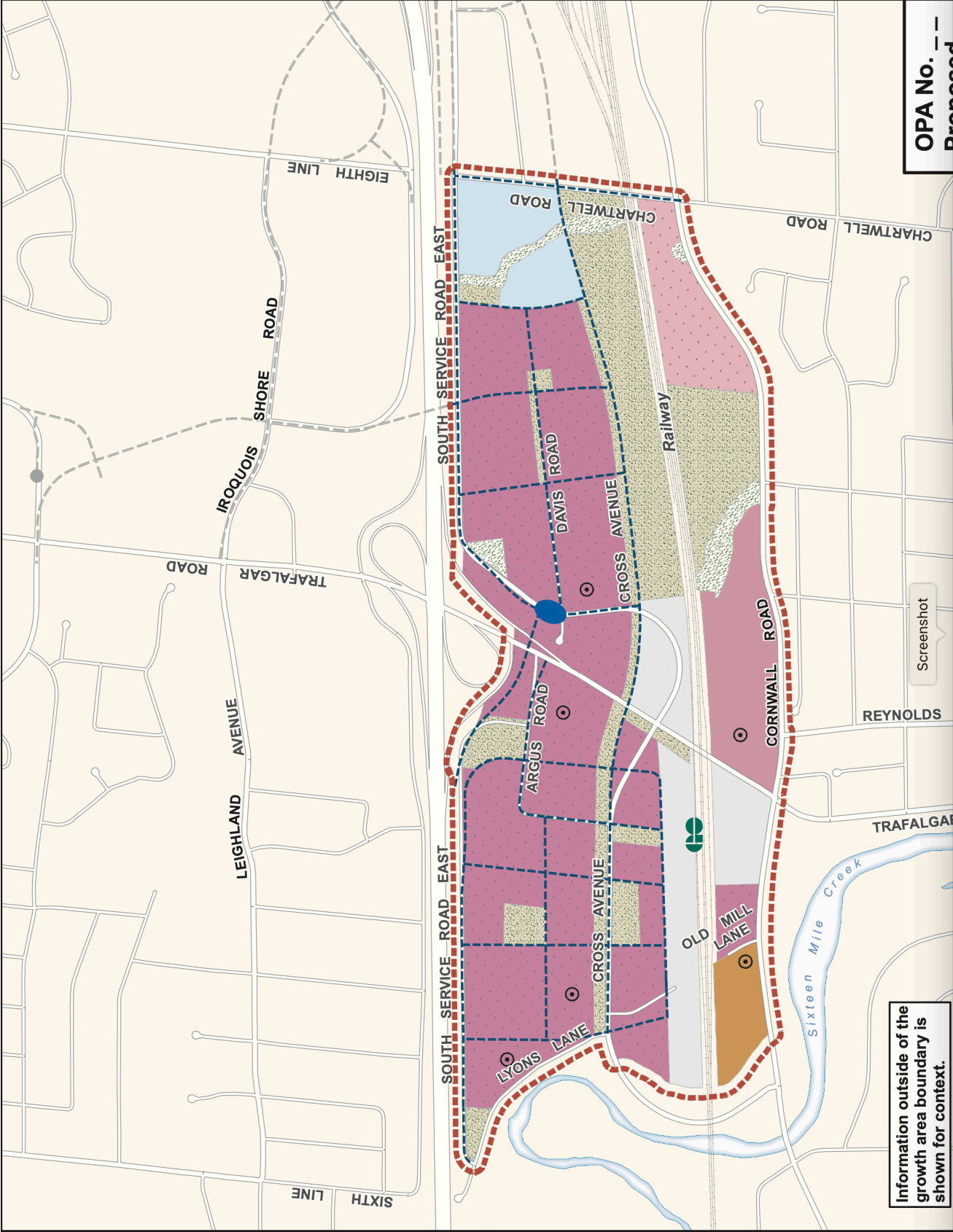
- URBAN GROWTH CENTRE / PROTECTED MAJOR TRANSIT STATION AREA
- GROWTH AREA BOUNDARY
- HIGH DENSITY RESIDENTIAL
- COMMUNITY COMMERCIAL
- URBAN CENTRE
- URBAN CORE
- OFFICE EMPLOYMENT
- NATURAL AREA
- PARKS AND OPEN SPACE
- UTILITY
- FUTURE ROADS
- INTERSECTION CONFIGURATION SUBJECT TO FURTHER STUDY
- RAILWAY
- MAJOR TRANSIT STATION

REFER TO PART E, MIDTOWN OAKVILLE, FOR GROWTH AREA POLICES

REFER TO PART E, MIDTOWN OAKVILLE EXCEPTIONS



1:7,500
May 2, 2023



Information outside of the growth area boundary is shown for context.

OPA No. ---
